

AEROBIN DIMENSIONS

200 LITRE AEROBIN

510mm x 510mm x 1175mm approx.
(when assembled)

530mm x 485mm x 550mm approx.
(packed for delivery)

Mass 13 kg (empty)

Capacity approximately
200 litres/200 kg

400 LITRE AEROBIN

740mm x 740mm x 1200mm approx.
(when assembled)

770mm x 770mm x 760mm approx.
(packed for delivery)

Mass 26 kg (empty)

Capacity approximately
400 litres/400 kg

Distributed by:
Global Environment Management Australia Pty. Ltd.
Unit 4, 18-22 Lexia Place Mulgrave, Victoria,
Australia, 3170

PHONE (Toll Free)

1800 615 445

EMAIL

info@aerobin.com.au

WEBSITE:

www.aerobin.com.au

All Rights Reserved - Technology and design incorporated within the Aerobin is the subject of the following patent protection: International Patent applied for No. PCT-AU2005-001501; US Patent granted 6518057; Australia Patent granted 772528; Canada Pat. No. 2328680 applied for. Aerobin is a registered trade mark of Global Environment Management (FZC)

© Copyright 2006 Global Environment Management Australia Pty. Ltd.



a member of Samvardhana Motherhood Group



THE AEROBIN - THE WORLD'S MOST ADVANCED STATIC HOME COMPOSTER, EMBODYING INNOVATION, TECHNOLOGY, DESIGN, QUALITY & NATURE.



400 & 200 Litre Aerobin illustrated

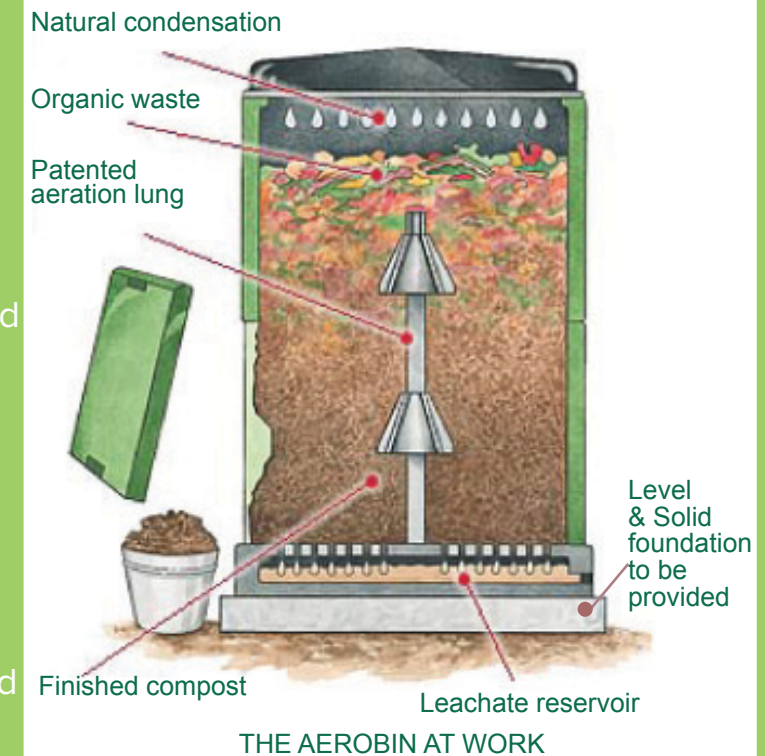
AND NOW THE ALL NEW 200 LITRE AEROBIN

Recycle smart with Aerobin

AEROBIN MAKES COMPOSTING QUICK, EASY AND REWARDING

A technological breakthrough in the field of Home Composting. So what are the attributes that Aerobin collectively offers?

- ⇒ Aeration Lung (no manual intervention)
- ⇒ A suite of patented features
- ⇒ Insulated Walls and Lid - supporting year round composting
- ⇒ Aerobic composting of both kitchen and garden waste (actually recyclables)
- ⇒ Moisture recirculation system
- ⇒ Leachate Reservoir - collects the liquid nutrients - free fertilizer
- ⇒ 2 Access Doors – location convenience and access to the compost
- ⇒ High operating temperatures will kill weeds & pathogens
- ⇒ It's quick, easy & rewarding to use and no manual intervention is necessary



Please ensure when installing your Aerobin it is placed onto a level and solid foundation – not soil or lawn. Concrete or paved paths, concrete pads, bricks, or heavy timber are all ideal.

the next step in recycling

composting for the future

We all know that planet earth is in trouble and we need to help, but did you know that sending your organic waste to landfill contributes to the emission of harmful greenhouse gases contributing directly to global warming.

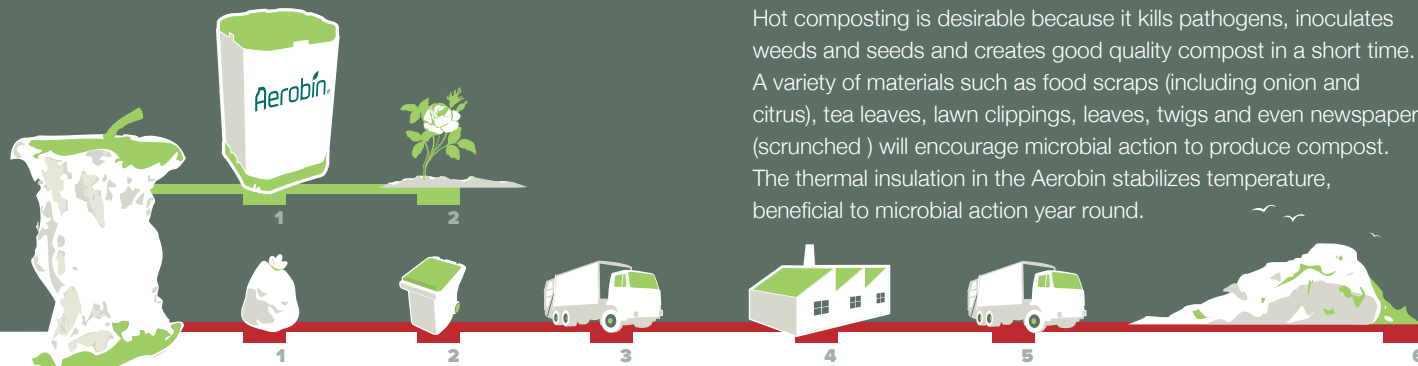
With the revolutionary Aerobin you can contribute positively to the environment with aerobic composting, rather than sending your food and garden waste to landfill. The patented technological design of the Aerobin overcomes the problems many people have had with composting, and it produces high quality compost and liquid fertiliser to feed back into your garden, giving health to our environment and reducing your carbon footprint.



how many steps does it take to get rid of your apple core?

The Aerobin is so easy to use – just open the lid, drop in organic waste and close. After a short time fertile compost is produced, which is easily accessed at either side. Aerobin captures liquid nutrients that can be used as liquid fertiliser. Compost releases nutrients from organic matter to feed your plants and improve your soil.

The Aerobin creates the perfect environment for hot composting. Hot composting is desirable because it kills pathogens, inoculates weeds and seeds and creates good quality compost in a short time. A variety of materials such as food scraps (including onion and citrus), tea leaves, lawn clippings, leaves, twigs and even newspaper (scrunched) will encourage microbial action to produce compost. The thermal insulation in the Aerobin stabilizes temperature, beneficial to microbial action year round.



where technology meets the environment

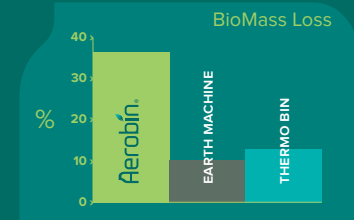
Worldwide Endorsement

Eden Project, Cornwall, UK
Mr. Tim Pettitt (Microbiologist)
“At the Eden Project we believe passionately in composting. Here in Cornwall we compost 150 tonnes of waste each year for use in improving the soil in our biomes and elsewhere on site. We have tested the Aerobin at Eden and found it to be one of the best domestic composting bins we have tried. It is especially good at producing a reliable and useful compost in a relatively short time. We are so impressed that we now use the Aerobin as part of our training programmes, teaching horticulturalists of the future how to make good compost. We think that most people will find Aerobin easy and reliable to use at home.

The Aerobin is a technological breakthrough. It uses a patented lung® within an insulated bin to promote aerobic and efficient break down of organic matter. This aerobic process helps reduce greenhouse gas emissions.

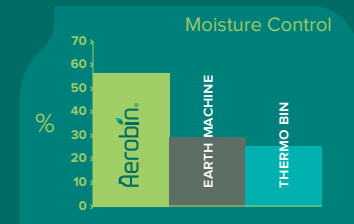
Developed by an Australian company, this new technology came about as a result of concern for the carbon cycle on planet Earth.

The modern design is also vermin and pet resistant and easy to assemble. All materials used are recyclable.



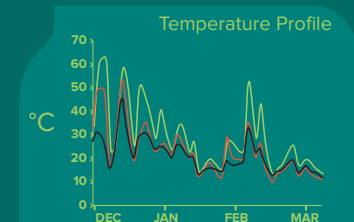
RESULTS FROM SOME KEY TESTS

Aerobin was considerably advanced in producing mature compost* over other bins tested over 12 weeks.



BIOMASS LOSS AND MOISTURE CONTROL GRAPHS

Aerobin's material decomposed better, because it was the leader on biomass loss and moisture control combined. Moisture readings below 30% are too dry – presenting an OH&S risk.



TEMPERATURE PROFILE

The Aerobin ran up to 10° hotter - the higher the heat, the quicker the break down of organic waste.

*AEROBIN ACHIEVED ROTTEGRAD INDEX 4 AGAINST ROTTEGRAD 3 IN OTHER BINS

The Aerobin has been tested and endorsed by the Swinburne University of Technology, Environment & Biotechnology Centre in Australia.

Aerobin®
The waste revolution for modern living